

Preserving What Matters Most



Celfrost provides expert help on design, supply, installation and hassle-free service for your coldroom needs. We specialize in preservation & storage of products ranging from fruits & vegetables, frozen foods, dairy products, and beverages to medicines & vaccinations.

Leading brands like Accor, Hilton, Marriott, Taj Hotels, Pizza Hut, Subway, Johnson & Johnson, Ranbaxy, Dr. Reddy's Lab, Dinshaw's, Blue Dart, DHL, KFC, P.D. Hinduja, Radisson, Westin, Park Plaza, ITC Fortune Hotels, Haldiram and Ramada are just some of the names in our growing list of satisfied customers.

Team Celfrost has vast experience in the design and construction of Coldrooms to suit your specific requirements, whether it is for hotels, restaurant chains and food service, or hospitals, pharmaceutical and research facilities. It offers an extensive range of Coldroom solutions, in a choice of temperatures to suit a variety of requirements and budgets.

Frozen Foods



Fruits & Vegetables



Dairy Products



Medicines & Vaccines



Fast Food



Beverages



Feature-packed to your specific requirements

Features

- Quick and easy-to-install modular construction
- Flexible panel sizes ensuring efficient space utilisation upto the last 6 inches of space
- Optimal temperature management, with a choice of low-energy consuming, unitary or remote refrigeration system
- Refrigerator (+1 / +4°C) and Freezer (-18 / -25°C) and many more temperatures available
- Aesthetically designed flush doors
- Panel joints sealed with PVC gaskets, making routine cleaning easy and eliminating moisture penetration
- Reliable, warranty and post-warranty support available in several locations across India
- Scale drawings for approval and sign-off before construction begins

Options :

- Panels with '+' joint & 'T' joints
- Pre-painted GI or SS skin or Stucco Aluminium
- Flexible sizes with step of 10 mm.
- Sliding Doors
- Glass Peep-in Window, Strip Curtain
- High & Low temp Alarm
- BMS compatible controller

Flooring :

- Smooth galvanised steel
- Aluminium chequered plate
- More options available

Wall Panels :

- Standard height options 2.1 m, 2.4 m and 2.7 m
- Maximum width 1180 mm / Panel
- More options also available

Ceiling Panels :

- Minimum Size of 1180 mm x 1770 mm
- Various unsupported ceiling lengths & widths available



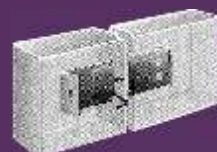
Foamed-in-Place Polyurethane

Most advanced, high-density of 40 kg/m³ PUF insulation ensures best insulating efficiency and uniform structure. Available in 60, 75, 80, 100, 125 & 150 mm thickness



Perfect Panel Configuration

Available in a variety of Height and Width dimensions – Walls, Floor, Door Frame, Door Leaf, Tee Walls, Corners & Ceilings. PVC Gaskets at all joints make them perfect



Cam Locking

Cam locking assemblies ensure perfect alignment of Walls, Ceiling, Floors, Corner Panels, Door Frames & joining of two rooms



Flush Type Door

Aesthetic, efficient, durable, suitable for heavy-duty usage. Flush-fit with FRP door perimeter



Imported Hardware

All Hinges and the Handle are heavy-duty cast alloy, and brushed-chrome finish for that special look



"Our products demonstrate our commitment to energy efficiency, safety, ergonomics and environmental best practices"

Make any choice for a world of Coldroom solutions



Sweep Gasket

Creates an airtight seal along the bottom edge of the door, with a double sweep which maintains its flexibility across temperature extremes and prolonged usage



Seal Closure

The Special-seal closure mechanism cushions the closing movement, shuts the door silently and keeps it seal-closed, preventing loss in cooling



Heated Air Vent

Heated Air Vents are standard on big size Celfrost Freezer rooms, to eliminate vacuum and pressure inside



Interior Safety Release

Eliminates the chance of people getting trapped inside if the handle gets locked by mistake. A simple quarter-turn of the safety release knob opens the door



Durable FRP Door Leaf

The door leaf is made of Fibreglass Reinforced Plastic (FRP) lining. They don't dent, rust, warp or scratch, and easily bear up against the impact of roll-in trolleys / carts



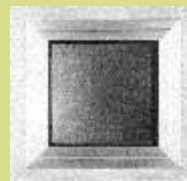
Durable FRP Threshold

The long-lasting FRP lining prevents corrosion, oxidation and makes the door joint totally condensation-proof



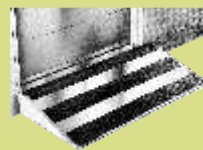
Digital Temperature Display

Displays the accurate temperature inside the Coldroom



View Port (optional)

Enables looking inside the Coldroom, without having to open the door; enables checking if the door swing-path is free of obstructions



Inner & Outer Ramp (optional)

Enables smooth material flow



High quality shelving

Strong and stable rust free shelving that is easy to assemble and quick to clean



Stainless Steel Grating

High quality stainless steel grating for drainage is available as an option

Energy-efficient Refrigeration Units



Temperature Controller

Presenting Celfrost Refrigeration Systems, with temperatures ranging from -50°C to +15°C.

These world-class Condensing and Evaporator units are the perfect complement to your Coldroom Panel Assembly.

Salient Features :

- Imported & Indian energy-efficient compressors
- Designed for high ambient conditions
- Plastic / powder-coated grills
- Stainless steel or pre-painted aluminium evaporators
- Option of hermetic & semi-hermetic compressors
- Option of BMS compatible HACCP controller

Benefits :

- Long life
- Compact
- Excellent heat transfer
- Low power consumption
- Aesthetically pleasant design



Condensing Units



Evaporator Unit



Unitary/Plug-in System

Technical Specifications

Model No.	Refrigeration Capacity BTU / Hr.	Temp. Range (C)	Loading Temp. (C)	Max. Loading (kgs./Day)	Max. Room Volume (CFT)	Max. Room Area with 8' Ht. (SQ. FT.)	Ambient (C)	Power* Consumption (kw)	Power Supply (V / Ph / Hz)	Defrosting	Approx. weight (Kgs)
CH-8	8000	2 to 6	30	280	512	64	38 to 42	1.6	230 / 1 / 50	Off-cycle	70
CH-12	12000	2 to 6	30	540	960	120	38 to 42	2.0	230 / 1 / 50	Off-cycle	90
CH-15	15000	2 to 6	30	770	1360	170	38 to 42	2.5	230 / 1 / 50	Off-cycle	110
CH-19	19000	2 to 6	30	1000	1800	225	38 to 42	3.0	400 / 3 / 50	Off-cycle	150
CH-21	21000	2 to 6	30	1200	2080	260	38 to 42	3.4	400 / 3 / 50	Off-cycle	150
CH-36	36000	2 to 6	30	2200	3800	475	38 to 42	5.3	400 / 3 / 50	Off-cycle	170
CH-41	41000	2 to 6	30	2600	4520	565	38 to 42	5.7	400 / 3 / 50	Off-cycle	180
CL-4	4000	(-20 to -23)	-10	160	280	35	38 to 42	1.5	230 / 1 / 50	Electric	78
CL-6	6000	(-20 to -23)	-10	280	512	64	38 to 42	2.0	400 / 3 / 50	Electric	85
CL-8	8000	(-20 to -23)	-10	425	750	90	38 to 42	2.8	400 / 3 / 50	Electric	95
CL-10	10000	(-20 to -23)	-10	570	1000	125	38 to 42	3.4	400 / 3 / 50	Electric	110
CL-14	14000	(-20 to -23)	-10	900	1600	200	38 to 42	4.3	400 / 3 / 50	Electric	130
CL-19	19000	(-20 to -23)	-10	1400	2520	315	38 to 42	6.2	400 / 3 / 50	Electric	185
CL-23	23000	(-20 to -23)	-10	2000	3520	440	38 to 42	8.1	400 / 3 / 50	Electric	200
CPL-6	6000	(-20 to -23)	-10	280	512	64	38 to 42	2.2	400 / 3 / 50	Electric	80
CPL-9	9000	(-20 to -23)	-10	500	920	115	38 to 42	3.2	400 / 3 / 50	Electric	105

Basis of Design : (A) Loading will be 10 lbs / sq.ft. per day. (B) Door Openings : 2 to 3 / Hr. (C) Refrigerant : R-22 for CH-range and R-404a for CL / CPL-range of equipment. (D) Supply Voltage : 200V - 240V or *50 Kg/sqm per day for single phase while 380V - 460V for three-phase supply; otherwise use voltage stabiliser. (E) CH/CM-range offered for 15°C to -5°C is with Hermetic Danfoss / Copeland compressor, while CL range is offered for -10°C to -50°C with Semi-Hermetic Copeland / Bitzer / Dorin range of condensing unites. Scroll compressor available on request.

Celfrost reserves the right to change the specification without prior notice.



CELFRUST INNOVATIONS PVT. LTD.

(Formerly, Celsius Refrigeration Pvt. Ltd.)

Corp. Office : 7th Floor, Udyog Minar Udyog Vihar, Phase-V, Gurgaon - 122 016, Haryana, INDIA

Phone : +91 124 4308430 / 4062401. Fax : +91 124 4308431

E-mail : corp@celfrost.com

Other Offices :

Ahmedabad : 9375933335	Bengaluru : 9590047656	Chennai : 9345509016
Cochin : 9349060306	New Delhi : 9312933066	Haryana : 9017195010
Hyderabad : 9346447254	Kolkatta : 9339761988	Lucknow : 9335174580
Mumbai : 022-25175477/76	Orissa : 9337298974	Pune : 9370573030
Punjab / J&K : 9357615927	Rajasthan : 9351317208	Uttarakhand : 9017195010

AUTHORISED DEALER / DISTRIBUTOR

Visit us at www.celfrost.com



Freezers • Showcase Coolers • Reach-Ins • Undercounter Refrigeration • Back Bars • Wine Coolers • Minibars • Ice Cube Making Machines • Food Preparation Equipment • Ultra Low Temp Freezers • Water Coolers • Bottled Water Dispensers • Pastry Showcases • Ice Cream Scooping Cabinets • Coldrooms • Supermarket Refrigeration Products • Espresso Coffee Machines • Juice Dispensers • Soft Serve Ice-cream Machines • Microwave Combination Ovens • Impinger Ovens • Combi Steamers • Fryers • Ice Flakers • Sandwich Grillers • Bakery Equipment • Commercial Dishwashers • Bar Blenders • Catering & Cooking Equipment • Blast Freezers/Chillers • Dessert Ingredients